



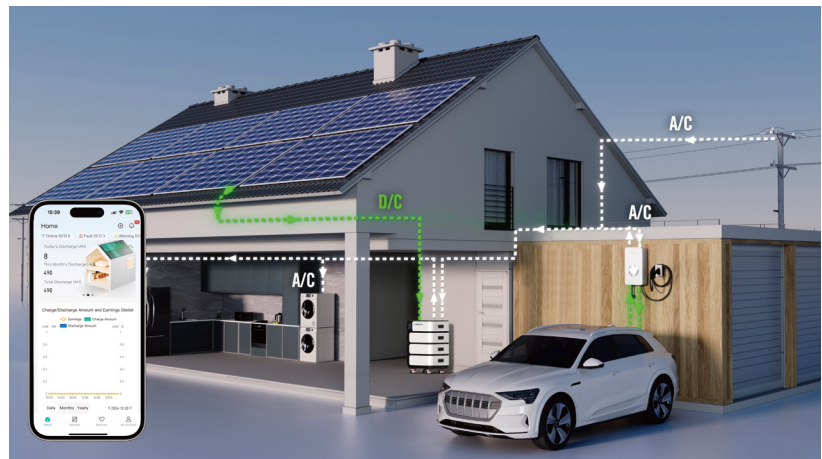
Model		EH04	
Inverter Parameter			
Rated Output Power	KW	5	10
Rated Output Voltage	Vac	230	
Input Voltage Range	Vac	(170~280Vac)±2% (90~280Vac)±2%	
Max PV Input power	W	6000	12000
Max PV Input Voltage	Vdc	500	
MPPT Voltage Range	Vdc	120~450	
Max PV Charging Current	A	22	22
Battery Parameter			
Battery Type		LiFePO ₄ ,16S1P	
Battery Capacity Per Pack	AH	100	
Battery Power		5.12kWh*(2~4 Suggestion)	5.12kWh*(4~8 Suggestion)
Rated Voltage	V	51.2	
Rated Output Current	A	100	
BMS Protective Current	A	105	
Charging Cut-off Voltage	V	57.6	
Charging Current	A	50	100
Maximum Charging Current Of The Mains	A	60	120
Peak Charging Current	A	100	200
Charging Mode		Constant Current/Constant Voltage	
Discharge Cut-off Voltage	V	42.4	
Discharge Current	A	100	200
Maximum Discharge Current	A	100	200
Charging Temperature	°C	0 ~ 65°C (32 ~149°F)	
Discharge Temperature	°C	-20 ~ 65°C (-4 ~149°F)	
Storage Temperature	°C	>1 month, 0~35°C	
		≤1 month, -20~45°C	
Ambient Humidity		15~90%Relative humidity (no condensation)	
Cycle Life		6000,80%DOD@25°C	

Product Advantages

1. Stackable Design: Allows users to flexibly increase or decrease the number of battery packs according to their household electricity needs, saving space.
2. International Standard Compatibility: Supports both European and American standards, comes with a complete set of accessories, and includes a detailed instruction manual.
3. Built-in Battery Management System (BMS): Protects the battery from overload, overheating, and short circuiting during the charging process.
4. Smart Integration: Supports internet connectivity and Bluetooth, and comes with a dedicated app, allowing our energy storage system to seamlessly integrate into your smart life.
5. High-Quality Wheels: Equipped with high-quality wheels that ensure smooth and effortless movement without getting stuck, and they have excellent load-bearing capacity.

Use Aoke ePower APP To Monitor Your System

By downloading Aoke ePower App from the App Store or Google Play, users can monitor battery SOC, charge and other related data in real time.



DIMENSIONS AND WEIGHT		EH04			
Inverter Parameter(Unit set)					
Dimensions (L x W x H)	mm	624*432*173			
Weight	kg	21±2			
Battery Parameter(Unit set)					
Dimensions (L x W x H)	mm	624*442*190			
Weight	kg	49±2			
Pedestal Parameter(Unit set)					
Dimensions (L x W x H)	mm	580*400*140			
Weight	kg	9			
Container Loading Size		5KW/10KWH	5KW/15KWH	10KW/15KWH	10KW/20KWH
		70 units	56 units	44 units	38 units
		142 units	110 units	89 units	76 units

